

## Flow Limiting

# BF



## OVERVIEW

### Operation

- Mechanical flow limiter

### Application

- Water treatment
- Irrigation
- Sanitary installations

### Features

- Universal orientation
- High reliability
- No power supply required
- Suitable for hot water
- Threaded connection

### Installation information

- The operating instructions for BF must be observed!
- **Download: [www.meister-flow.com](http://www.meister-flow.com)**

## OPERATING DATA

<b>Control pressure</b>	2 - 10 bar
<b>Operating pressure, max.</b>	10 bar
<b>Temperature, max.</b>	200 °C
<b>Measuring accuracy</b>	up to 2 l/min ± 15 %
	of nominal value
	at 3 l/min and higher ± 10 %
	of nominal value

## FLOW

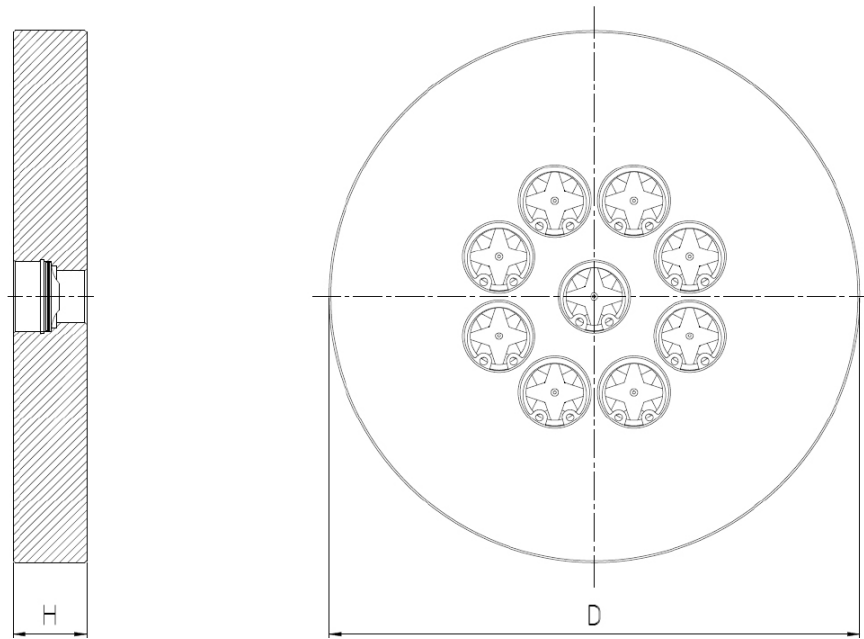
Type	Flow for H <sub>2</sub> O at 20 °C	
	Q <sub>min</sub> l/min	Q <sub>max</sub> l/min
BF [DN 40]	2	60
BF [DN 50]	4	120
BF [DN 65]	7	210
BF [DN 80]	9	270
BF [DN 100]	14	420

## MATERIALS

### Stainless steel version, wetted parts

Device body:	1.4571
Regulating star:	1.4310
Cone:	1.4301
Rivet:	1.4301
Spacer ring:	1.4310
Retaining ring:	1.4122

## TECHNICAL DRAWING



## SUMMARY OF TYPES

Type	Overall dimensions [mm]		Number of Regulating stars	Pressure rating Device body	Flow [l/min]		H [mm]	D [mm]
	Nennweite	Standard			min.	max.		
BF	DN 40	DIN / ASME	2	PN 16 / 300 lbs	2	60	19,1	95
BF	DN 50	DIN	4	PN 16	4	120	18,0	110
BF	DN 50	ASME	4	300 lbs	4	120	23,9	113
BF	DN 65	DIN / ASME	7	PN 16 / 300 lbs	7	210	23,9	130
BF	DN 80	DIN	9	PN 16	9	270	20,0	145
BF	DN 80	ASME	9	300 lbs	9	270	23,9	150
BF	DN 100	DIN	14	PN 16	14	420	20,0	165
BF	DN 100	ASME	14	300 lbs	14	420	23,9	182



# MASTERPIECES MADE IN GERMANY

BF 4 0001 12-15 E M

Meister Strömungstechnik GmbH • Im Gewerbegebiet 2 • 63831 Wiesen / Germany  
Tel. +49 (0) 6096 9720-0 • Fax +49 (0) 6096 9720-30 • sales@meister-flow.com • www.meister-flow.com  
The general business terms of Meister Strömungstechnik GmbH are valid • All rights reserved

